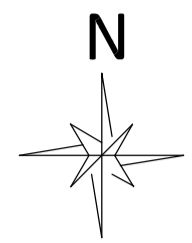


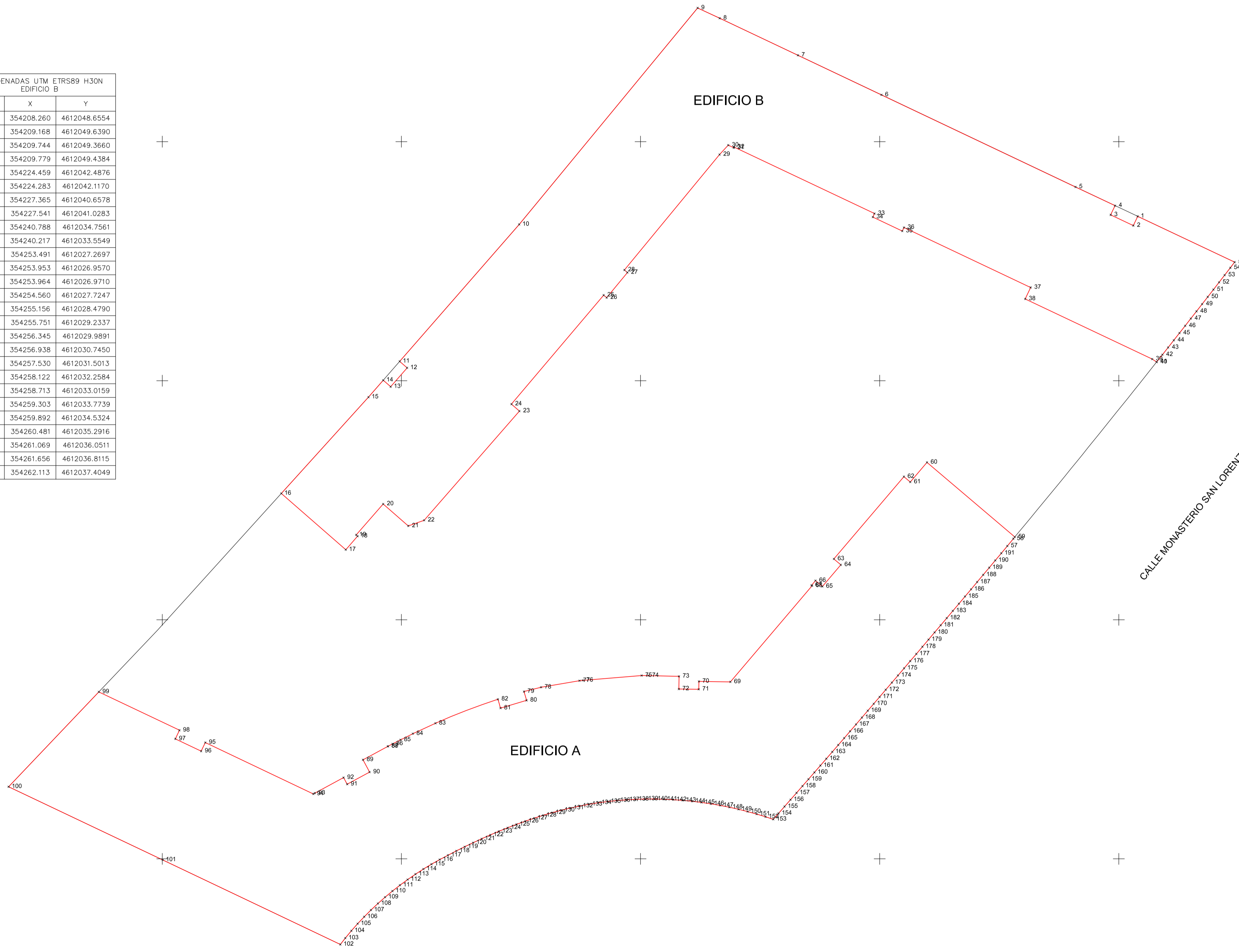
4612075mY  
4612050mY  
4612025mY  
4612000mY  
4611975mY



VILLA DEL PRADO  
TERMINO MUNICIPAL DE VALLADOLID

COORDENADAS UTM ETRS89 H30N EDIFICIO B			
Nº punto	X	Y	
1	354251.976	4612042.1957	
2	354251.517	4612041.2271	
3	354249.149	4612042.3483	
4	354249.607	4612043.3151	
5	354245.476	4612045.2673	
6	354225.187	4612054.8964	
7	354216.459	4612059.0364	
8	354208.280	4612062.9112	
9	354205.968	4612063.9889	
10	354187.314	4612041.3501	
11	354174.822	4612027.0291	
12	354175.598	4612026.3520	
13	354173.876	4612024.3777	
14	354173.099	4612025.0549	
15	354171.557	4612023.2872	
16	354162.440	4612013.2135	
17	354169.184	4612007.3313	
18	354170.419	4612008.7480	
19	354170.271	4612008.8772	
20	354173.092	4612012.1112	
21	354175.717	4612009.8214	
22	354177.376	4612010.4102	
23	354187.338	4612021.8301	
24	354186.505	4612022.5564	
25	354196.143	4612033.9504	
26	354196.460	4612033.6897	
27	354198.628	4612036.3213	
28	354198.312	4612036.5820	

COORDENADAS UTM ETRS89 H30N EDIFICIO B			
Nº punto	X	Y	
29	354208.260	4612048.6554	
30	354209.168	4612049.6390	
31	354209.744	4612049.3660	
32	354209.779	4612049.4384	
33	354224.459	4612042.4876	
34	354224.283	4612042.1170	
35	354227.365	4612040.6578	
36	354227.541	4612041.0283	
37	354240.788	4612034.7561	
38	354240.217	4612033.5549	
39	354253.491	4612027.2697	
40	354253.953	4612026.9570	
41	354253.964	4612026.9710	
42	354254.560	4612027.7247	
43	354255.156	4612028.4790	
44	354255.751	4612029.2337	
45	354256.345	4612029.9891	
46	354256.938	4612030.7450	
47	354257.530	4612031.5013	
48	354258.122	4612032.2584	
49	354258.713	4612033.0159	
50	354259.303	4612033.7739	
51	354259.892	4612034.5324	
52	354260.481	4612035.2916	
53	354261.069	4612036.0511	
54	354261.656	4612036.8115	
55	354262.113	4612037.4049	



COORDENADAS UTM ETRS89 H30N EDIFICIO A			
Nº punto	X	Y	
57	354238.345	4612007.7193	
58	354238.974	4612008.4757	
59	354239.128	4612008.6618	
60	354229.945	4612016.4678	
61	354228.196	4612014.4106	
62	354227.532	4612014.9734	
63	354220.215	4612006.3642	
64	354220.938	4612005.7491	
65	354219.015	4612003.4860	
66	354218.291	4612004.1013	
67	354217.877	4612003.6137	
68	354217.938	4612003.5619	
69	354209.394	4611993.5107	
70	354206.101	4611993.5576	
71	354206.089	4611992.7327	
72	354204.005	4611992.7625	
73	354204.023	4611994.0874	
74	354200.834	4611994.1617	
75	354200.114	4611994.1720	
76	354193.969	4611993.6693	
77	354193.621	4611993.6343	
78	354189.594	4611992.9446	
79	354187.813	4611992.4973	
80	354188.086	4611991.5753	
81	354185.363	4611990.7685	
82	354185.089	4611991.6942	
83	354178.557	4611989.1802	
84	354176.197	4611988.0892	
85	354174.897	4611987.4466	
86	354174.074	4611987.0243	
87	354173.600	4611986.7751	
88	354173.582	4611986.7656	
89	354170.982	4611985.3616	
90	354171.675	4611984.0772	
91	354169.326	4611982.8085	
92	354168.953	4611983.4992	
93	354165.953	4611981.8788	
94	354165.790	4611981.7912	
95	354154.499	4611987.1652	
96	354154.063	4611986.2650	
97	354151.364	4611987.5495	
98	354151.794	4611988.4525	
99	354143.366	4611992.4634	
100	354133.930	4611982.5411	
101	354150.045	4611974.8877	
102	354168.616	4611966.0496	
103	354169.135	4611966.7169	
104	354169.768	4611967.4774	
105	354170.426	4611968.2202	
106	354171.109	4611968.9444	
107	354171.815	4611969.6488	
108	354172.543	4611970.3324	
109	354173.291	4611970.9941	
110	354174.059	4611971.6328	
111	354174.845	4611972.2474	
112	354175.648	4611972.8371	
113	354176.467	4611973.4005	
114	354177.300	4611973.9367	
115	354178.146	4611974.4446	
116	354179.002	4611974.9228	
117	354179.866	4611975.3798	
118	354180.736	4611975.8270	
119	354181.613	4611976.2636	
120	354182.499	4611976.6889	
121	354183.391	4611977.1015	
122	354184.291	4611977.5006	
123	354185.197	4611977.8853	
124	354186.111	4611978.2544	

COORDENADAS UTM ETRS89 H30N EDIFICIO A			
Nº punto	X	Y	
125	354187.031	4611978.6068	
126	354187.957	4611978.9417	
127	354188.890	4611979.2580	
128	354189.828	4611979.5546	
129	354190.773	4611979.8307	
130	354191.724	4611980.0850	
131	354192.680	4611980.3167	
132	354193.641	4611980.5247	
133	354194.608	4611980.7079	
134	354195.579	4611980.8653	
135	354196.556	4611980.9960	
136	354197.526	4611981.0988	
137	354198.502	4611981.1763	
138	354199.481	4611981.2287	
139	354200.464	4611981.2560	
140	354201.450	4611981.2586	
141	354202.436	4611981.2364	
142	354203.423	4611981.1897	
143	354204.408	4611981.1185	
144	354205.392	4611981.0231	
145	354206.373	4611980.9036	
146	354207.349	4611980.7601	
147	354208.321	4611980.5928	
148	354209.286	4611980.4017	
149	354210.244	4611980.1871	
150	354211.194	4611979.9491	
151	354212.135	4611979.6878	
152	354213.065	4611979.4033	
153	354213.875	4611979.1324	
154	354214.628	4611979.7598	
155	354215.055	4611980.4722	
156	354215.681	4611981.1852	
157	354216.306	4611981.8986	
158	354216.931	4611982.6125	
159	354217.555	4611983.3268	
160	354218.179	4611984.0417	
161	354218.802	4611984.7571	
162	354219.424	4611985.4729	
163	354220.046	4611986.1893	
164	354220.667	4611986.9062	
165	354221.288	4611987.6235	
166	354221.908	4611988.3412	
167	354222.527	4611989.0597	
168	354223.145	4611989.7785	
169	354223.763	4611990.4977	
170	354224.380	4611991.2174	
171	354224.997	4611991.9377	
172	354225.637	4611992.6600	
173	354226.277	4611993.3845	
174	354226.916	4611994.1033	
175	354227.555	4611994.8222	
176	354228.194	4611995.5414	
177	354228.832	4611996.2609	
178	354229.470	4611996.9807	
179	354230.107	4611997.7008	
180	354230.744	4611998.4213	
181	354231.381	4611999.1421	
182	354232.017	4612000.8633	
183	354232.652	4612001.5848	
184	354233.287	4612002.3068	
185	354233.922	4612003.0291	
186	354234.556	4612003.7516	
187	354235.189	4612004.4743	
188	354235.821	4612005.1971	
189	354236.453	4612005.9200	
190	354237.085	4612006.6430	
191	354237.715	4612007.3661	

COORDENADAS UTM SISTEMA DE REFERENCIA ETRS89

CLIENTE: Paredes y Rivas Arquitectos

TRABAJO: LEVANTAMIENTO TOPOGRÁFICO PARCELA URBANA 43221-01 T. M. VALLADOLID

DESCRIPCION: PLANO TAQUIMETRICO

EQUIDISTANCIA: 0,20 m

ESCALA: 1:250 Formato Hoja DIN-A1

FECHA: MAYO 2019

TOPOINCA S.L.  
Topografía, Cartografía y Geodesia  
Martín Lutero King, 3. Bajo. 47013 - VALLADOLID  
Tel: 983456081 - E-mail: topoinca@topoinca.es